

10F27

9-2

TM 9-1005-224-35P

DEPARTMENT OF THE ARMY TECHNICAL MANUAL

*Property of
Col. George M. Chiss*

FIELD AND DEPOT
MAINTENANCE

REPAIR PARTS
AND
SPECIAL TOOLS LIST
FOR
GUN, MACHINE
7.62-MM, M60 AND
MOUNT, MACHINE GUN
7.62-MM, M91

Superseded



HEADQUARTERS, DEPARTMENT OF THE ARMY

565

APRIL 1959

1a

TECHNICAL MANUAL }
 No. 9-1005-224-35P }

HEADQUARTERS,
 DEPARTMENT OF THE ARMY
 WASHINGTON 25, D. C., 16 April 1959

GUN, MACHINE, 7.62-MM, M60 AND MOUNT, MACHINE GUN, 7.62-MM, M91

	Page
SECTION I. PREFACE.....	2
II. REPAIR PARTS AND SPECIAL TOOLS.....	5
Components of major combination.....	5
Repair parts for:	
GUN, MACHINE, 7.62-MM, M60.....	5
MOUNT, MACHINE GUN, 7.62-MM, M91.....	8
Linker-Delinker, Hand, 7.62-MM.....	10
Tools and equipment authorized for unit replacement for:	
GUN, MACHINE, 7.62-MM, M60.....	10
MOUNT, MACHINE GUN, 7.62-MM, M91.....	10
Special Tools for:	
Field Maintenance.....	10
Depot Maintenance.....	11
STOCK NUMBER INDEX.....	22
PART NUMBER INDEX.....	24

SECTION I PREFACE

1. General

a. This manual is a list of items authorized for field and depot maintenance of the 7.62-mm machine gun M60 and 7.62-mm machine gun mount M91.

b. For third echelon, this list contains all items authorized for initial stockage for third-echelon maintenance and supply support to second echelon.

c. For fourth echelon, this list contains those items authorized for initial stockage for fourth-echelon maintenance.

d. For fifth echelon, this list serves as a guide for recommended repair parts for the rebuild of 100 major components and/or major end items.

e. For prices of the Ordnance items listed herein, see the appropriate supply manual of the SM 9-2-series. Prices of items that are the responsibility of technical services other than Ordnance may be obtained from the appropriate type 2 supply manuals for those services.

f. Additional applications of items in this manual are listed in the SM 9-3-series.

2. Requisition Notes

a. If the exact item requisitioned is not furnished, or if other action is necessary, the exact nature of the action taken by the supplying agency will be indicated by standard symbols on prescribed forms.

b. When requisitioning an item, the requesting agency will order the *listed* item. However, the supplying agencies will take necessary action to issue the exhaust stock item until stock is exhausted, whether it be an individual item, kit, set, or assembly.

3. Explanation of Columns

a. *Source, Maintenance, and Recoverability Code.* This column lists a code that indicates the selection status and source of supply of the repair part, the lowest echelon capable of installing or manufacturing the repair part, and the recoverability and expendability aspects of the repair part. An example of this code is P D R. The "P" indicates that the item is a mission stockage list repair part that is procured and stocked on a national program basis, the "D" indicates that the repair part is authorized to depot only, and the "R" indicates that the repair part is an ex-

pendable, recoverable item. When repair parts supply responsibility has been assigned to a technical service other than Ordnance, the basic number of the supplying technical service is listed in the first position of the source code, for example, "11" for a Signal Corps item. Refer to paragraph 5 for an explanation of all codes appearing in this manual.

b. *Federal Stock Number.* This column lists the Federal stock number which has been assigned by the Cataloging Division, Armed Forces Supply Support Center.

c. *Description.* This column lists the Federal item name (shown in capital letters) and any additional description required for supply operations. The technical service or manufacturer's part number is also included for reference.

d. *Unit of Issue.* This column lists the smallest package quantity to be requisitioned singly, or in multiples thereof, by Ordnance maintenance units. Where the unit of issue is shown as ft, in., etc., the requisition should indicate the exact amount that is required.

e. *Quantity Incorporated in Unit.* This column lists the quantity of each listed part incorporated in the group or assembly. The total quantity of each part incorporated in the end item is listed in the part number index.

f. *15-Day Maintenance Allowance Per 100 Equipments.*

(1) This column lists an allowance factor which is based on the latest mortality data and is the estimated average quantity to provide maintenance and, where applicable, supply support for 100 equipments for a 15-day period under combat conditions. A decimal fraction system is used to express the allowance factors.

(2) Since the allowance factors are based on 100 equipments, it is necessary to compute the exact quantity authorized. This quantity is determined by use of a simple mathematical formula. Resulting fractional values of 0.5 or larger will be rounded to the next higher whole number. Fractional values below 0.5 will be rounded to the next lower whole number.

Example 1: If the number of equip-

ments supported is 30 and the allowance factor for 100 equipments is 1.9, the following computation would be made:

$$\frac{30 \times 1.9}{100} = 0.57$$

Since the resulting figure is larger than 0.5, the echelon would be authorized a quantity of 1.

Example 2: If the number of equipments supported is 89 and the allowance factor for 100 equipments is 3.4, the following computation would be made:

$$\frac{89 \times 3.4}{100} = 3.026$$

In this instance, the result is rounded to the next lower whole number since the fractional value is less than 0.5 and the echelon would be authorized a quantity of 3.

- (3) Additional items not expected to fail during the first year, but which may be required to perform authorized field maintenance in subsequent years, are listed with no allowance factor shown. These parts are identified by an asterisk in the allowance columns and are to be requisitioned as required for immediate use only.
- (4) The quantity determined in accordance with (2) above, represents the initial stockage for a 15-day period. Major commanders will prescribe the period of time that will be used to compute stockage for each echelon.
- (5) Field supply units (fourth-echelon tables of equipment supply companies and posts, camps, and stations) will compute their loads considering the number of Ordnance units to be supported and/or major item density, and utilizing figures in the field maintenance column.
- (6) In order that the Ordnance Corps at large may be able to make equitable distribution of the total stock of any one item, Ordnance organization commanders should limit their requisitions and stocks to the absolute minimum requirements that are estimated to be necessary for each contemplated tactical operation. The chief Ordnance officer of a force is responsible that various Ordnance units in the force do not use the same items

in computing their stocks; for example, if there is a grand total of 168 guns or mounts in the entire force, each Ordnance unit in the force should not claim the entire 168 guns or mounts as a basis for computing its stocks. The chief Ordnance officer must allocate, for repair-parts-stockage purposes, the number of items in the force among the various units. See supply functions of the company, FM 9-10.

g. *Depot Maintenance Guide Per 100 Equipments.*

- (1) This column lists the guide quantity factors for the repair parts recommended for the rebuild of 100 major components and/or major end items.
- (2) The quantities indicated in this column are for initial requisition. They will be revised by the depot organization to conform to actual usage, which may be more or less than the quantities indicated herein.
- (3) To compute the maintenance stock level for more or less than 100 major items, the system in f(2) above, may be utilized.
- (4) Additional repair parts which may be required for performing authorized depot maintenance are listed with no recommended quantities shown. These parts are identified by an asterisk in the allowance column. If not obtainable from reclamation, fabrication, or local procurement, these parts will be requisitioned as required for immediate use only.

h. *Depot Stockage Guide Per 10 Tool Sets.* Replenishment for special tools is indicated in depot stockage guide.

i. *Illustration.* This column indicates the figure number of the illustration that depicts the item. When more than one item appears on an illustration, the item number is also indicated. Items that appear on the illustrations and in the legends of the illustrations but which are not listed in the tabular listing are nonrepair parts and are not authorized.

4. Abbreviations

cal.....caliber
hdl.....handle(d)
maint.....maintenance
max.....maximum

mech.....mechanic or mechanism
 min.....minimum
 mm.....millimeter(s)
 NC.....American National Coarse Thread
 NF.....American National Fine Thread
 thk.....thick(ness)
 UNF.....Unified Fine Thread
 w.....wide, width
 w/.....with

5. Explanation of Codes

Source, Maintenance and Recoverability Codes:

Code Explanation
P Applied to repair parts which are high mortality parts procured by technical services, stocked in and supplied from the technical service depot system, and authorized for use at indicated maintenance echelons.
PI Applied to repair parts which are low mortality parts procured by technical services, stocked only in and supplied from technical service key depots, and authorized for installation at indicated maintenance echelons.

Code Explanation
O Assigned to repair parts authorized to first (1st) and second (2nd) echelons.
F Assigned to repair parts authorized to field maintenance, third (3rd) echelon level.
H Assigned to repair parts authorized to field maintenance but restricted to fourth (4th) echelon.
D Assigned to repair parts authorized to depot maintenance, fifth (5th) echelon only.
NR Indicates a repair part or assembly that is non-expendable and recoverable and is economically repairable.
R Indicates a repair part or assembly that is expendable and recoverable and is economically repairable and when available, is furnished by supply on an exchange basis.

6: Suggestions and Recommendations

Notice of discrepancies and recommendations for additions and deletions of repair parts and special tools should be forwarded on DA Form 2028 to the Commanding Officer, Raritan Arsenal, Metuchen, N. J., ATTN: ORDJR-CPRA.

**SECTION II
 REPAIR PARTS AND SPECIAL TOOLS**

(1) Source, maintenance, and recoverability code	(2) Federal stock No.	(3) Description	(4) Unit of issue	(5) Quantity incorporated in unit	(6) 15-day maintenance allowance per 100 equipments		(7) Depot maintenance guide per 100 equipments (5th echelon)	(8) Illustration	
					(a) 3d echelon (direct support)	(b) 4th echelon (general support)		(a) Figure No.	(b) Item No.
		COMPONENTS OF MAJOR COMBINATION GUN MACHINE 7.62-MM, M60 (8413999) MOUNT, MACHINE GUN 7.62-MM, M91 (7269600)							
		REPAIR PARTS FOR: GUN, MACHINE, 7.62-MM, M60							
P	1005-608-5037	ACTUATOR ASSEMBLY, CAM: (7269063)		1	2	1	9	1	5
P	1005-608-5002	BARREL ASSEMBLY: (7269028)		1	2	1	9	2	12
P	1005-608-5039	BEARING, FIRING PIN: (7269065)		1	2	1	9	1	4
P	1005-608-5003	BIPOD ASSEMBLY: (7269029)		1	2	1	9	2	3
P	1005-608-5034	BOLT: (7269060)		1	2	1	9	1	13
P	1005-608-5070	BUFFER ASSEMBLY: (7269096)		1	2	1	6	4	
P	1005-608-5088	CAM ASSEMBLY, FEED (7269115)		1	1	1	6	4	5
P	1005-608-5071	CAP, BUFFER: (7269097)		1	1	1	5	5	3
P	1005-608-5153	CATCH, FOREARM: (7269180)		1	1	1	9	6	
P	1005-608-5122	CHASSIS ASSEMBLY, CARRIER: (7269148)		1	2	1	9	4	2
P	1005-608-5119	CLIP, SPRING LEVER, feed cam (7269146)		1	2	1	9	1	8
P	1005-608-5072	COVER, BUFFER: (7269098)		1	2	1	6	2	6
P	1005-608-5047	EJECTOR: (7269073)		1	2	1	9	1	10
P	1005-608-5004	EXTENSION, GAS CYLINDER: (7269030)		1	1	1	9	6	
P	1005-608-5048	EXTRACTOR: (7269074)		1	2	1	9	5	7
P	1005-608-5141	FOREARM ASSEMBLY: (7269168)		1	2	1	9	7	
P	1005-608-5298	FRAME ASSEMBLY, CARTRIDGE TRAY: riveting (7269831)		1	2	1	9	10	6
P	1005-608-5172	GUIDE ASSEMBLY, DRIVING SPRING: (7269199)		1	2	1	9	10	7
P	1005-608-5089	GUIDE, CARTRIDGE, FRONT: (7269116)		1	2	1	9	10	7
P	1005-608-5090	GUIDE, CARTRIDGE, REAR: (7269117)		1	2	1	9	10	7
P	1005-608-5171	GUIDE, COCKING HANDLE: (7269198)		1	2	1	9	11	6
P	1005-608-5203	HANDLE ASSEMBLY, CARRYING: (7269231)		1	2	1	9	11	6
P	1005-608-5073	HOUSING ASSEMBLY, BUFFER: (7269099)		1	2	1	3	4	12
P	1005-608-5091	HOUSING ASSEMBLY, COVER: (7269118)		1	2	1	8		
P	1005-608-5176	HOUSING, ASSEMBLY, TRIGGER: (7269203)		1	2	1	6	9	12
P	1005-608-5109	LATCH, COVER: (7269136)		1	2	1	9		
P	1005-608-5214	LATCH, HINGE PIN: (7269248)		1	2	1	12		

(1) Source, maintenance, and recoverability code		(2) Federal stock No.	(8) Description	(4) Unit of issue	(5) Quantity incorporated in unit	(6) 15-day maintenance allowance per 100 equipments		(7) Depot maintenance guide per 100 equipments (5th echelon)	(8) Illustration
(a) Technical service No.	(b) Source					(c) Maintenance level	(d) Recoverability		
REPAIR PARTS FOR—Continued									
GUN, MACHINE, 7.62-MM, M60—Continued									
P	F	1005-608-5110	LEVER ASSEMBLY, LATCH: (7269137)	1	1	2	1	9	11
P	O	1005-608-5215	LEVER, BARREL LOCK: (7269244)	1	1	2	1	9	10
P	F	1005-608-5188	LEVER, FEED: (7269145)	1	1	2	1	9	2
P	F	1005-608-5005	NUT, GAS CYLINDER: (7269081)	1	1	1	1	4	2
P	F	5310-011-5999	NUT, PLAIN, HEXAGON: steel, phosphate coated, No. 10 (0.190)-32NF-2B, 5/8 w, 1/2 thk: (115999)	1	2	2	1	9	12
P	H	1005-608-5075	PAD ASSEMBLY, BUFFER: (7269102)	1	4		4	12	4
P	F	1005-608-5093	PAWL ASSEMBLY, FEED: (7269120)	1	1	2	1	9	10
P	F	1005-608-5299	PAWL, CARTRIDGE, RETAINER: (7269332)	1	1	2	1	9	7
P	O	1005-608-5055	PIN, FIRING: (7269081)	1	1	2	1	12	1
P	F	5315-608-5094	PIN, GROOVED, HEADLESS: cartridge guide (7269121)	1	1	2	1	10	10
P	F	1005-608-5301	PIN, GROOVED, HEADLESS: bolt retaining pawl (7269334)	1	1	1	1	9	7
P	F	1005-608-5218	PIN, HINGE, COVER: (7269247)	1	1	2	1	6	2
P	O	1005-608-5054	PIN, LOCK: (7269080)	1	1	2	1	9	1
P	H	1005-608-5074	PIN, LOCK, COVER: (7269101)	1	1		2	4	4
P	F	1005-608-5022	PIN, RETAINER, SPRING: (bipod) (7269048)	1	2	2	1	12	3
P	F	1005-608-5178	PIN, RETAINING: (trigger mech) (7269205)	1	2	1	1	4	9
P	F	1005-608-5177	PIN, SHOULDER, HEADED: (trigger hinge) (7269204)	1	1	1	1	4	9
P	F	5315-608-5157	PIN, SHOULDER, HEADLESS: (handguard catch) (7269184)	1	1	1	1	6	5
P	F	1005-608-5219	PIN, SPRING, RETAINER: (barrel lock) (7269248)	1	1	1	1	6	1
P	O	1005-608-5058	PIN, STRAIGHT, HEADED: (ejector) (7269084)	1	1	2	1	9	11
P	F	1005-608-5217	PIN, STRAIGHT HEADED: (carrying handle) (7269246)	1	1	2	1	20	11
P	F	5315-050-5485	PIN, STRAIGHT HEADLESS: chamfer, drill rod, 1/8 x 5.8: (flash suppressor) (505485)	1	1	2	1	12	2
P	F	5315-608-5238	PIN, STRAIGHT, HEADLESS: (operating rod yoke) (7269270)	1	1	1	1	10	8
P	F	1005-608-5006	PISTON, GAS: (7269082)	1	1	2	1	12	2
P	O	1005-608-5056	PLUG ASSEMBLY, BOLT: (7269082)	1	1	2	1	9	1
P	O	1005-608-5007	PLUG, GAS CYLINDER: (7269083)	1	1	3	1	12	2
P	F	1005-608-5220	PLUNGER, BARREL LOCK: (7269249)	1	1	1	1	9	11
P	H	1005-608-5076	PLUNGER, BUFFER: (7269103)	1	1		1	4	4
P	F	1005-608-5221	PLUNGER, CARRYING HANDLE: (7269250)	1	1	2	1	4	11
P	F	1005-608-5209	PLUNGER, COCKING HANDLE: (7269238)	1	1	2	1	4	4
P	O	1005-608-5057	PLUNGER, EXTRACTOR: (7269083)	1	1	2	1	4	11
P	F	1005-608-5096	PLUNGER, RETAINER: (7269128)	1	1	2	1	12	2

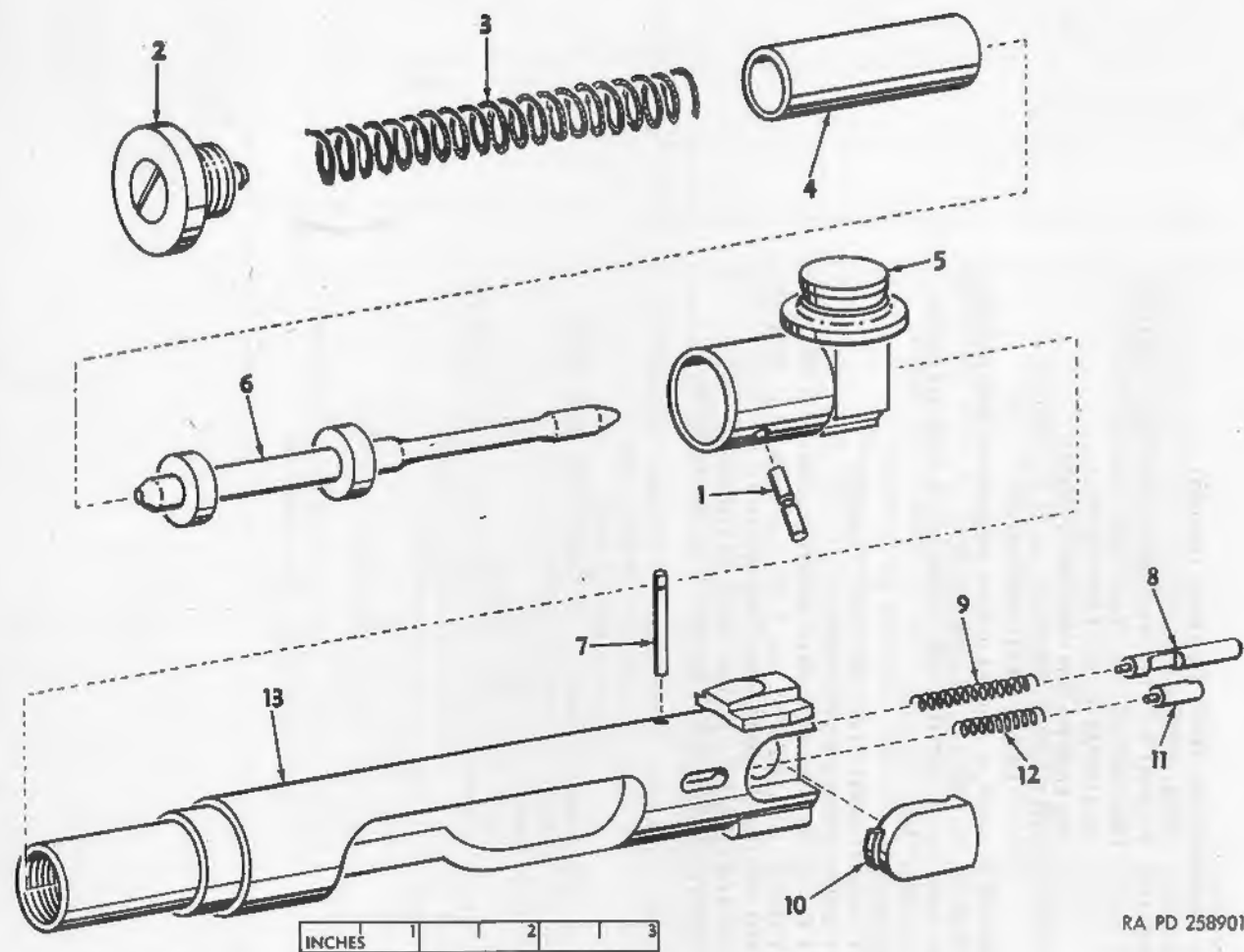
P	F	1005-608-5179	PLUNGER, SAFETY: (7269206)	1	1	2	1	9	9
P	F	1005-608-5180	PLUNGER, SEAR: (7269207)	1	1	2	1	9	5
P	F	1005-608-5024	PLUNGER, SPRING LEG: (7269050)	1	2	2	1	15	3
P	F	1005-608-5208	RETAINER, COCKING, HANDLE: (7269237)	1	1	1	1	6	4
P	F	1005-608-5097	RETAINER, FEED, CAM: (7269124)	1	1	1	1	12	11
P	F	1005-608-5234	RETAINER, SPRING: (barrel lock) (7269266)	1	1	2	1	9	2
P	F	1005-608-5027	RETAINER, SPRING, LEG: (7269053)	1	2	1	1	10	3
P	F	1005-608-5235	RING, HANDLE, RETAINING: (7269267)	1	1	4	2	25	11
P	F	5340-543-3297	RING, RETAINING: external e-type, steel, phosphate coated, 1/8 shaft diameter (587571)	1	1	4	2	25	10
P	F	5340-286-6523	RING, RETAINING: external, e-type, steel, phosphate coated, 5/8 shaft diameter (587574)	1	2	8	6	40	7
P	F	5320-608-5012	RIVET, TUBULAR: (front sight) (7269038)	1	2	2	2	12	2
P	F	1005-608-5236	ROD ASSEMBLY, OPERATING: (7269268)	1	1	2	1	9	4
P	F	1005-608-5300	ROLLER, CARTRIDGE FEED: (7269333)	1	2	1	1	9	7
P	F	1005-608-5241	ROLLER, YOKE: (7269273)	1	1	1	1	9	3
P	F	1005-608-5143	SAFETY: (7269170)	1	1	2	1	9	2
P	F	5305-043-6913	SCREW, MACHINE: pan head, steel, phosphate coated, No. 10-(0.190)-32NF-2A x 5/8 (MS 35228-60)	1	1	2	1	9	5
P	H	1005-608-5077	SEAL, RUBBER ROUND SECTION: (7269104)	1	1		2	12	4
P	F	1005-608-5182	SEAR: (7269209)	1	1	3	2	9	4
P	F	1005-608-5244	SHAFT, BARREL, LOCKING: (7269276)	1	1	2	1	9	11
P	F	1005-608-5124	SHAFT, FEED PAWL: (7269151)	1	1	2	1	12	6
P	F	1005-608-5245	SIGHT ASSEMBLY, REAR: (7269277)	1	1	2	1	9	11
P	F	1005-608-5014	SIGHT, FRONT: (7269040)	1	1	1	1	9	2
P	F	1005-608-5210	SLIDE ASSEMBLY, COCKING HANDLE: (7269239)	1	1	1	1	6	5
P	F	1005-608-5160	SPRING, CATCH, FOREARM: (7269187)	1	1	2	1	9	2
P	F	1005-608-5026	SPRING, HELICAL, COMPRESSION: bipod leg (7269062)	1	2	2	1	15	3
P	O	1005-608-5059	SPRING, HELICAL, COMPRESSION: ejector (7269085)	1	1	2	1	12	1
P	O	1005-608-5060	SPRING, HELICAL, COMPRESSION: extractor (7269086)	1	1	2	1	12	1
P	O	1005-608-5061	SPRING, HELICAL, COMPRESSION: firing pin (7269087)	1	1	2	1	12	1
P	H	1005-608-5078	SPRING, HELICAL, COMPRESSION: buffer auxiliary (7269105)	1	1	2	2	4	4
P	H	1005-608-5079	SPRING, HELICAL, COMPRESSION: buffer (7269106)	1	1		2	9	4
P	F	1005-608-5080	SPRING, HELICAL COMPRESSION: stock cushion inner (7269107)	1	1	2	1	12	4
P	F	1005-608-5081	SPRING, HELICAL, COMPRESSION: stock cushion outer (7269108)	1	1	2	1	12	4
P	F	1005-608-5098	SPRING, HELICAL, COMPRESSION: cam retaining plunger (7269125)	1	1	2	1	12	3
P	F	1005-608-5183	SPRING, HELICAL, COMPRESSION: safety plunger (7269210)	1	1	2	1	9	9
P	F	1005-608-5184	SPRING, HELICAL, COMPRESSION: sear plunger (7269211)	1	1	2	1	9	6
P	F	1005-608-5211	SPRING, HELICAL, COMPRESSION: cocking lever (7269240)	1	1	1	1	25	11
P	F	1005-608-5268	SPRING, HELICAL, COMPRESSION: barrel lock (7269300)	1	1	2	1	9	11
P	F	1005-608-5270	SPRING, HELICAL, COMPRESSION: handle (7269302)	1	1	2	1	9	11
P	O	1005-608-5271	SPRING, HELICAL, COMPRESSION: operating rod (7269303)	1	1	2	1	12	11
P	F	1005-608-5115	SPRING, HELICAL, TORSION: cover latch (7269142)	1	1	2	1	12	6
P	F	1005-608-5125	SPRING, HELICAL, TORSION: feed pawl (7269152)	1	1	2	1	12	3
P	F	1005-608-5269	SPRING, HELICAL, TORSION: cover pawl (7269301)	1	1	2	1	12	6
P	F	1005-608-5302	SPRING, HELICAL, TORSION: belt retaining pawl (7269335)	1	1	2	1	12	7

(1) Source, maintenance, and recoverability code		(2) Federal stock No.	(3) Description	(4) Unit of issue	(5) Quantity incorporated in unit	(6) 15-day maintenance allowance per 100 equipments		(7) Depot maintenance allowance per 100 equipments	(8) Illustration	
(a) Technical service No.	(b) Source					(c) Maintenance level	(d) Recoverability		(a) 3d echelon (direct support)	(b) 4th echelon (general support)
REPAIR PARTS FOR—Continued										
GUN, MACHINE, 7.62-MM, M60—Continued										
P	O	1005-608-5216	SPRING, LOCK, PISTOL GRIP: (7269246)	1	1	2	1	9	9	1
P	O	1005-608-5272	STOCK ASSEMBLY, BUTT: (7269084)	1	1	2	1	9	9	1
P	F	1005-608-5008	SUPPRESSOR, FLASH: (7269084)	1	1	2	1	9	9	2
P	F	1005-608-5161	SWIVEL ASSEMBLY, SLING: (7269188)	1	2	1	1	10	5, 12	6, 3
P	O	1005-608-5276	TRAY ASSEMBLY, CARTRIDGE FEED: (7269308)	1	1	2	1	9	9	
P	F	1005-608-5185	TRIGGER ASSEMBLY: (7269212)	1	1	2	1	9	9	
P	O	1005-608-5162	WASHER, KEY, SWIVEL: (7269189)	1	1	2	1	9	9	
P	O	1005-608-5009	WASHER, KEY: (gas cylinder) (7269085)	1	2	8	4	50	5, 12	5, 2
P	F	1005-608-5311	YOKE, BUFFER, RETAINING: (7269344)	1	2	8	4	50	2, 2	7, 9
MOUNT, MACHINE GUN, 7.62-MM, M91										
P	H	1005-608-1180	BEARING ASSEMBLY, FRONT, ADJUSTMENT: screw (7269519)	1	1	1	1	12	12	
P	H	1005-608-1182	BEARING ASSEMBLY, REAR, ADJUSTMENT: screw (7269521)	1	1	1	1	12	12	
P	D	1005-608-1215	BEARING ASSEMBLY, UPPER: (7269555)	1	1	1	1	5	5	
P	D	1005-608-1217	BEARING ASSEMBLY, LOWER: (7269557)	1	1	1	1	5	5	
P	F	1005-608-1163	BLOCK, ADJUSTMENT: (7269502)	1	1	1	1	10	10	11
P	D	1005-608-1164	BLOCK, CLAMPING: (7269503)	1	1	1	1	10	10	
P	D	1005-608-1175	BUSHING, SLEEVE: (7269514)	1	1	1	1	10	10	
P	D	1005-608-1191	BUSHING, SLEEVE: (7269530)	1	2	1	1	10	10	
P	F	1005-608-1170	CAP, ADJUSTMENT, SCREW: (7269509)	1	2	1	1	6	6	
P	F	1005-608-1253	CLAMP ASSEMBLY, MAIN SPINDLE: (7269594)	1	1	1	1	12	14	3
P	H	1005-608-1224	CLAMP, DIAL: (7269564)	1	1	1	1	8	8	
P	H	1005-608-1242	CLIP: chain (7269583)	1	1	1	1	8	8	
P	H	1005-608-1171	DETECT, CLICKER, ELEVATION: (7269510)	1	1	1	1	12	12	
P	H	1005-608-1233	DETECT, CLICKER, TRAVERSE: (7269573)	1	1	1	1	25	25	
P	F	1005-608-1219	DIAL, ASSEMBLY: (7269559)	1	1	1	1	25	25	
P	D	1005-608-1225	FORK, TRAVERSE, ADJUSTMENT: (7269565)	1	1	1	1	8	8	
P	F	1005-608-1166	HANDLE, ELEVATION, CLAMP: (7269505)	1	1	1	1	3	3	
P	F	1005-608-1258	HANDLE: leg clamping (7269604)	1	1	1	1	6	13	5
P	F	1005-608-1226	INDICATOR, TRAVERSE ADJUSTMENT: (7269566)	1	1	1	1	6	14	5
P	F	1005-608-1222	KNOB, DIAL, CLAMP: (7269562)	1	3	1	1	8	8	
P	F	1005-608-1177	KNOB, ELEVATION: (7269516)	1	1	1	1	5	5	
P	F	1005-608-1231	KNOB, TRAVERSE: (7269571)	1	1	1	1	3	3	
P	D	1005-608-1267	LEG ASSEMBLY, FRONT: (7269616)	1	1	1	1	3	3	
P	D	1005-608-1270	LEG ASSEMBLY, REAR, LEFT: (7269623)	1	1	1	1	7	7	

P	D	1005-608-1272	LEG ASSEMBLY, REAR, RIGHT: (7269628)	1	1	1	1	7	7	
P	D	1005-608-1178	NUT, ELEVATION, ADJUSTMENT: (7269517)	1	1	1	1	9	9	
P	F	1005-608-1257	NUT, SAFETY, HEXAGON: THIN: (7269603)	1	3	1	1	12	14	4
P	F	5310-050-3341	NUT, SELF-LOCKING HEXAGON: steel, phosphate coated, 1/4-28UNF-3B, 1/8, 1/8 thk (critical installation) (508341).	1	2	1	1	30	13	1
P	D	1005-608-1232	NUT, TRAVERSE: (7269572)	1	1	1	1	9	9	
P	F	1005-608-1240	PIN ASSEMBLY, QUICK RELEASE, FRONT: (7269580)	1	1	1	1	15	15	
P	F	1005-608-1247	PIN ASSEMBLY, QUICK RELEASE, REAR: (7269588)	1	1	1	1	15	15	
P	F	1005-608-1190	PIN, STRAIGHT, PRECISION: (7269529)	1	2	1	1	12	12	
P	F	1005-608-1234	PIN, TRUNNION, LEFT: (7269574)	1	1	1	1	15	15	4
P	F	1005-608-1235	PIN, TRUNNION, RIGHT: (7269575)	1	1	1	1	15	15	3
P	D	1005-620-0708	PLATE, LEG LOCK: (7269612)	1	3	1	1	18	14	8
P	D	1005-608-1194	PLATFORM ASSEMBLY, RECOIL: (7269593)	1	1	1	1	5	5	
P	F	1005-608-1179	PLUNGER, DETENT: (7269518)	1	2	1	1	12	12	
P	D	1005-608-1211	RETAINER ASSEMBLY, CLEVIS: (7269551)	1	1	1	1	9	9	
P	F	1005-608-1196	RETAINER, LEVER, QUICK RELEASE: pin (7269535)	1	1	1	1	18	18	
P	F	5320-013-4637	RIVET, SOLID: button head, steel, annealed, 1/8 x 1/4 (134637)	1	2	1	1	36	36	
P	F	5320-058-8362	RIVET, SOLID: universal head, aluminum alloy, anodized or chemically treated finish, 1/8 x 1/8 (538362).	1	2	1	1	36	36	
P	F	1005-608-1237	SCREW, CAP, SOCKET, HEAD: (7269577)	1	6	1	1	50	50	
P	F	1005-608-1193	SCREW, CAP, SOCKET, HEAD FLAT: (7269532)	1	2	1	1	8	8	
P	F	1005-608-1229	SCREW, CAP, SOCKET HEAD, FLAT: (7269569)	1	8	1	1	100	100	
P	F	5305-285-5192	SCREW, CAP, SOCKET HEAD: hexagon socket, alloy steel, phosphate coated, No. 10 (0.190)-32NF-3 x 1/2 (MS 35460-11).	1	4	1	1	40	40	
P	F	1010-714-6131	SCREW, CLAMPING, LEG: (71461 1)	1	3	1	1	12	14	10
P	F	1005-608-1184	SCREW, DETENT, PLUNGER: (7269523)	1	2	1	1	10	10	
P	D	1005-608-1185	SCREW, ELEVATION, ADJUSTMENT: (7269524)	1	1	1	1	5	5	
P	D	5305-013-3700	SCREW, MACHINE: flat head, steel phosphate coated, No. 12 (0.216)-24NC-2A x 1/2 (133700).	1	9	1	1	25	25	
P	F	5305-012-1457	SCREW, MACHINE: flat head, steel, phosphate coated, No. 12 (0.216)-24NC-2A x 1/2 (121457).	1	2	1	1	12	12	
P	F	1005-608-1256	SCREW, SET, SOCKET, FLAT DOG: point (7269602)	1	1	1	1	10	10	1
P	F	1005-608-1255	SCREW, SET, SOCKET, HALF DOG POINT: (7269601)	1	1	1	1	10	14	2
P	D	1005-608-1230	SCREW, TRAVERSE ADJUSTMENT: (7269570)	1	1	1	1	5	5	
P	D	1005-608-1204	SLEEVE, GUIDE ROD: (7269544)	1	1	1	1	5	5	
P	F	1005-608-1238	SPINDLE, MAIN: (7269568)	1	1	1	1	5	5	
P	F	1005-608-1136	SPRING, HELICAL, COMPRESSION: (7269525)	1	1	1	1	12	12	
P	F	1005-608-1205	SPRING, HELICAL, COMPRESSION: (7269545)	1	2	1	1	8	8	
P	F	1005-608-1206	SPRING, HELICAL, COMPRESSION: (7269546)	1	1	1	1	8	8	
P	F	1005-608-1207	SPRING, HELICAL, COMPRESSION: (7269547)	1	1	1	1	16	16	
P	F	1005-608-1165	STUD, CLAMPING: (7269504)	1	2	1	1	12	12	9
P	F	1005-606-9676	WASHER, FLAT, KNURLED: (7269617)	1	1	1	1	8	8	
P	F	5310-543-5162	WASHER, FLAT: steel, phosphate coated, 3/8 inside diameter, 1/8 outside diameter, 0.051 thk, for 3/8 bolt size (MS 15795-114).	1	1	1	1	8	13	6
P	F	5310-011-8664	WASHER, FLAT: steel, phosphate coated, 3/8 inside diameter, 3/4 outside diameter, 0.066 thk, for 1/2 screw size (MS 15796-111).	1	2	1	1	30	13	2
P	F	1090-714-1541	WASHER, KEY, TRIPOD SOCKET: (7141541)	1	1	1	1	12	13	

(1) Source, maintenance, and recoverability code			(2) Federal stock No.	(3) Description	(4) Unit of issue	(5) Quan- tity incor- porated in unit	(6) 15-day maintenance allowance per 100 equipments		(7) Depot main- tenance guide per 100 equip- ments (5th edition)	(8) Illustration
(a) Tech- nical service No.	(b) Source	(c) Main- tenance level					(d) Re- cover- ability	(a) 3d echelon (direct support)		
REPAIR PARTS FOR—Continued										
				MOUNT, MACHINE GUN, 7.62-MM, M91—Continued						
	P	F	NR	1005-608-1169 WASHER, THRUST: (7269508)	1	1			5	
	P	F	NR	1005-649-8722 LINKER-DELINKER, HAND, 7.62-MM						
	P	F	NR	1005-649-8721 GUIDE, CARTRIDGE: (7269370)	1		0.5	0.5		
	P	F	NR	1005-649-8720 ROLLER, LOADING HANDLE: (7149813)	1		0.5	0.5		
	P	F	NR	1005-649-8720 STUD, ROLLER, LOADING HANDLE: (7149812)	1		0.5	0.5		
	P	F	NR	WRENCH, COMBINATION SCREWDRIVER AND REAMER						
	P	F	NR	5315-608-5314 PIN, SHOULDER, HEADED: (7269348)	1		1	1		
	P	F	NR	4933-608-5313 REAMER ASSEMBLY: (7269347)	1		1	1		
	P	F	NR	5310-608-5315 WASHER, SPRING TENSION: (7269349)	1		1	1		
				TOOLS AND EQUIPMENT AUTHORIZED FOR UNIT REPLACEMENT FOR: GUN, MACHINE, 7.62-MM, M60						
	P	O	NR	1005-605-2198 BRUSH ASSEMBLY, CHAMBER CLEANING: (7269355)	1		2			
	P	O	NR	1005-722-5087 BRUSH: bore, 20-mm M25 (7226087)	1		2			
	P	O	NR	1005-650-4508 BRUSH, CLEANING, SMALL ARM: receiver (7790342)	1		1			
	P	O	NR	1005-556-4174 BRUSH, CLEANING, SMALL ARMS, CALIBER .30: (5564174)	1		2			
	P	O	NR	1005-605-2201 CASE, CARRYING, BARREL ASSEMBLY AND EQUIPMENT: (7269358)	1		1			
	P	O	NR	4933-605-2202 EXTRACTOR, RUPTURED CARTRIDGE CASE: (7269359)	1		1			
	P	O	NR	1005-605-2200 HANDLE, CHAMBER AND GAS CYLINDER: brush (7269357)	1		1			
	P	O	NR	1005-605-2199 LINKER-DELINKER, HAND: 7.62-mm (7269356)	1		1			
	P	O	NR	4933-726-5788 REFLECTOR, BARREL CALIBER .30: (7265788)	1		1			
	P	O	NR	1005-650-8237 ROD: cleaning, jointed, cal.30, M1 (3 sections w/hdl) (6508237)	1		1			
	P	O	NR	1005-654-4058 SLING, GUN: M1 (webbing) (6544058)	1		1			
	P	O	R	4933-605-2197 WRENCH, COMBINATION, SCREWDRIVER AND REAMER: (7269345)	1		1			
	P	O	NR	MOUNT, MACHINE GUN, 7.62-MM, M91	1					
	P	O	NR	COVER, MOUNT, M91: (7269629)	1					
				SPECIAL TOOLS FOR: FIELD MAINTENANCE						
	P	F	NR	4933-653-3830 This tool set issued, as required to Ordnance maintenance units per- forming field maintenance support on the 7.62-MM, machine gun, M60. TOOL AND GAGE SET (FIELD MAINT) FOR GUN MACHINE, 7.62-MM, M60: (8421864).	1					

P	F	NR	4933-653-3869	Consisting of:						
P	F	NR	4933-653-9550	1 ASSEMBLING TOOL, BUFFER: (7269361)						1
P	F	NR	4933-653-3373	1 BOLT, FIELD, TEST: (7799699)						1
P	F	NR	4933-653-3372	1 GAGE, FIRING PIN PROTRUSION: 0.035-0.043 (7274754)						1
P	F	NR	4933-653-3370	1 GAGE, HEADSPACE: max 1.640 (field rejection) (7274748)						1
P	F	NR	5220-745-8598	1 GAGE, HEADSPACE: min 1.631 (7274739)						1
P	F	NR	4933-313-9485	1 GAGE: plug firing pin hole max 0.108 (7458598)						1
P	F	NR	4933-313-9485	1 KIT, GAGE BARREL EROSION cal..30 M8 (5910297)						1
				DEPOT MAINTENANCE						
P	D	NR	4933-653-3831	This tool set issued, as required to depot maintenance units perform- ing rebuild on the 7.62-MM, machine gun, M60. TOOL AND GAGE SET (DEPOT MAINT) FOR GUN MACHINE, 7.62-MM, M60: (8421865).	1					
P	F	NR	4933-653-3869	Consisting of:						
P	F	NR	4933-653-9550	1 ASSEMBLING TOOL, BUFFER: (7269361)						1
P	F	NR	4933-653-3378	1 BOLT, FIELD, TEST: (7799699)						1
P	F	NR	4933-653-3871	1 GAGE, FIRING PIN PROTRUSION: 0.035-0.043 (7274754)						1
P	D	NR	4933-653-3870	1 GAGE, HEADSPACE: max 1.636 (depot rejection) (7274744)						1
P	F	NR	4933-653-3370	1 GAGE, HEADSPACE: min 1.631 (7274739)						1
P	F	NR	5220-745-8598	1 GAGE: plug firing pin hole max 0.108 (7458598)						1
P	F	NR	4933-313-9485	1 KIT, GAGE BARREL EROSION cal..30 M8 (5910297)						1

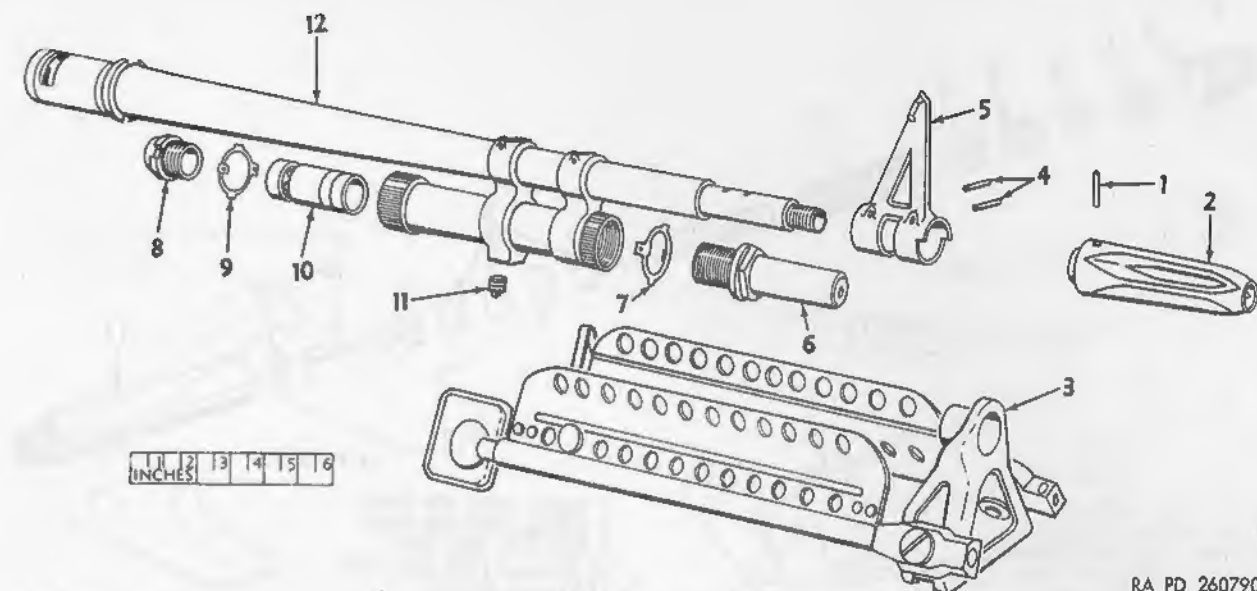


- 1 Pin 1005-608-5054
- 2 Plug assy 1005-608-5056
- 3 Spring 1005-608-5061
- 4 Bearing 1005-608-5039
- 5 Actuator assy cam 1005-608-5087
- 6 Pin 1005-608-5055
- 7 Pin 1005-608-5058

- 8 Ejector 1005-608-5047
- 9 Spring 1005-608-5059
- 10 Extractor 1005-608-5048
- 11 Plunger 1005-608-5057
- 12 Spring 1005-608-5060
- 13 Bolt 1005-608-5034

Figure 1. Bolt assembly—exploded view.

RA PD 258901

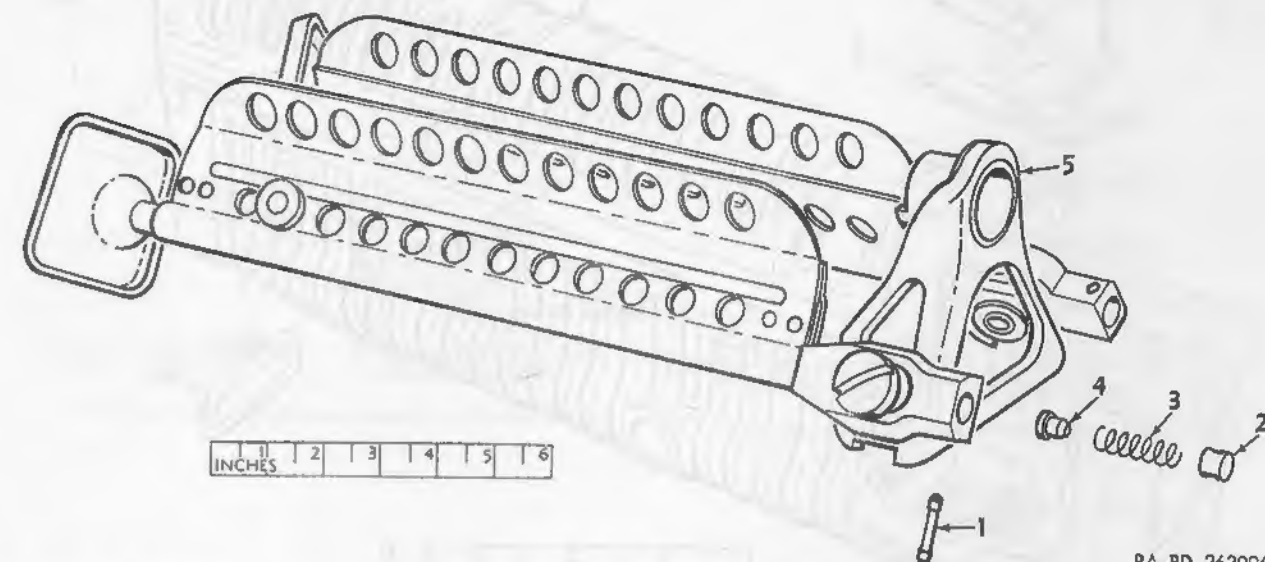


- 1 Pin 5315-050-5485
- 2 Suppressor 1005-608-5008
- 3 Bipod assembly 1005-608-5003
- 4 Rivet 5320-608-5012
- 5 Sight 1005-608-5014
- 6 Extension 1005-608-5004

- 7 Washer 1005-608-5009
- 8 Nut 1005-608-5005
- 9 Washer 1005-608-5009
- 10 Piston 1005-608-5006
- 11 Plug 1005-608-5007
- 12 Barrel assy 1005-608-5002

Figure 2. Barrel assembly—exploded view.

RA PD 260790

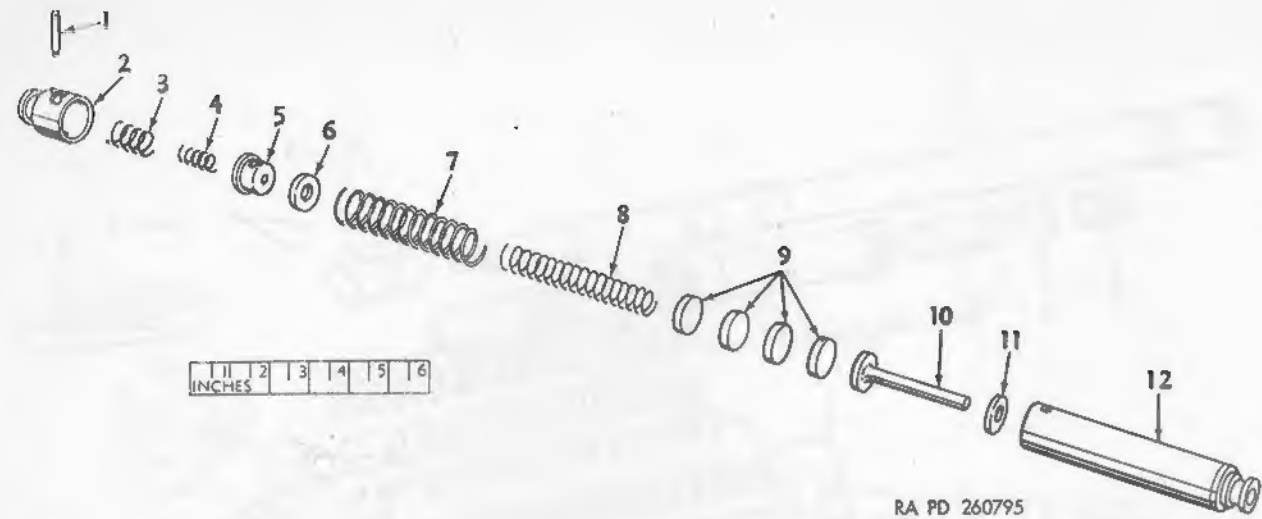


- 1 Pin 1005-608-5022
- 2 Retainer 1005-608-5027
- 3 Spring 1005-608-5026

- 4 Plunger 1005-608-5024
- 5 Leg assy 7269047

Figure 3. Bipod assembly—exploded view.

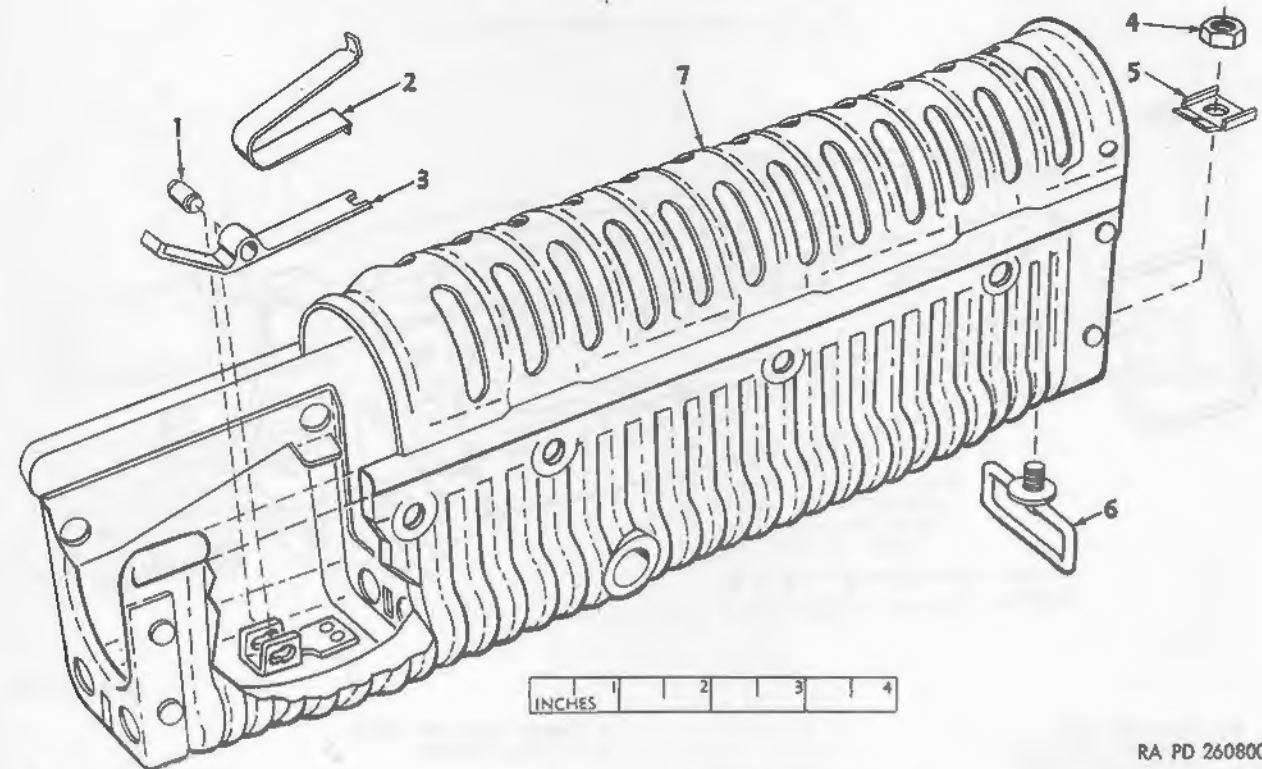
RA PD 263996



- 1 Pin 1005-608-5074
- 2 Cover 1005-608-5072
- 3 Spring 1005-608-5081
- 4 Spring 1005-608-5080
- 5 Cap 1005-608-5071
- 6 Seal 1005-608-5077

- 7 Spring 1005-608-5079
- 8 Spring 1005-608-5078
- 9 Pad 1005-608-5075
- 10 Plunger 1005-608-5076
- 11 Gasket 501219
- 12 Housing 1005-608-5073

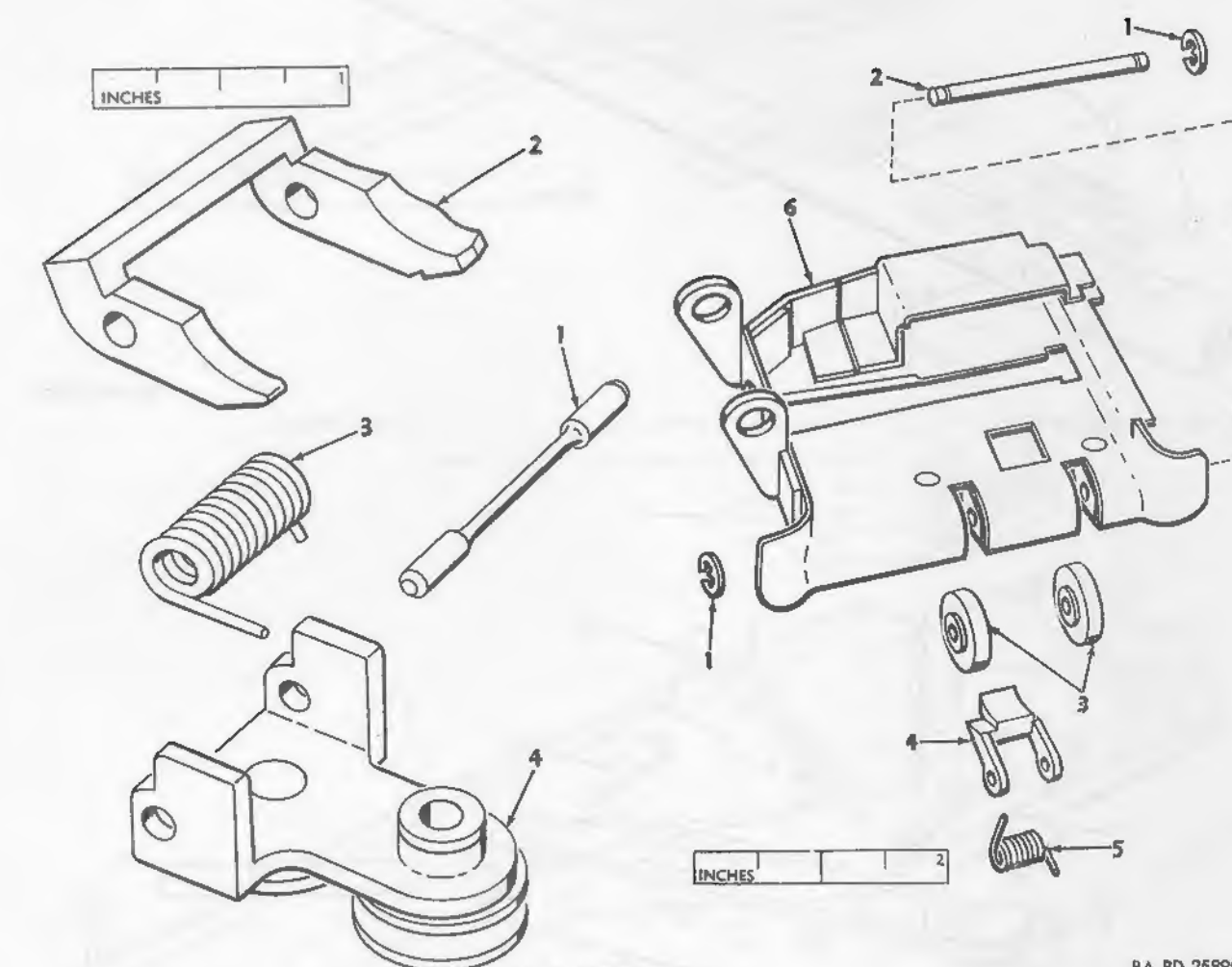
Figure 4. Buffer assembly—exploded view.



- 1 Pin 5315-608-5157
- 2 Spring 1005-608-5160
- 3 Catch 1005-608-5153
- 4 Nut 21844

- 5 Washer 1005-608-5162
- 6 Swivel 1005-608-5161
- 7 Cover assy 7269183

Figure 5. Forearm group—exploded view.

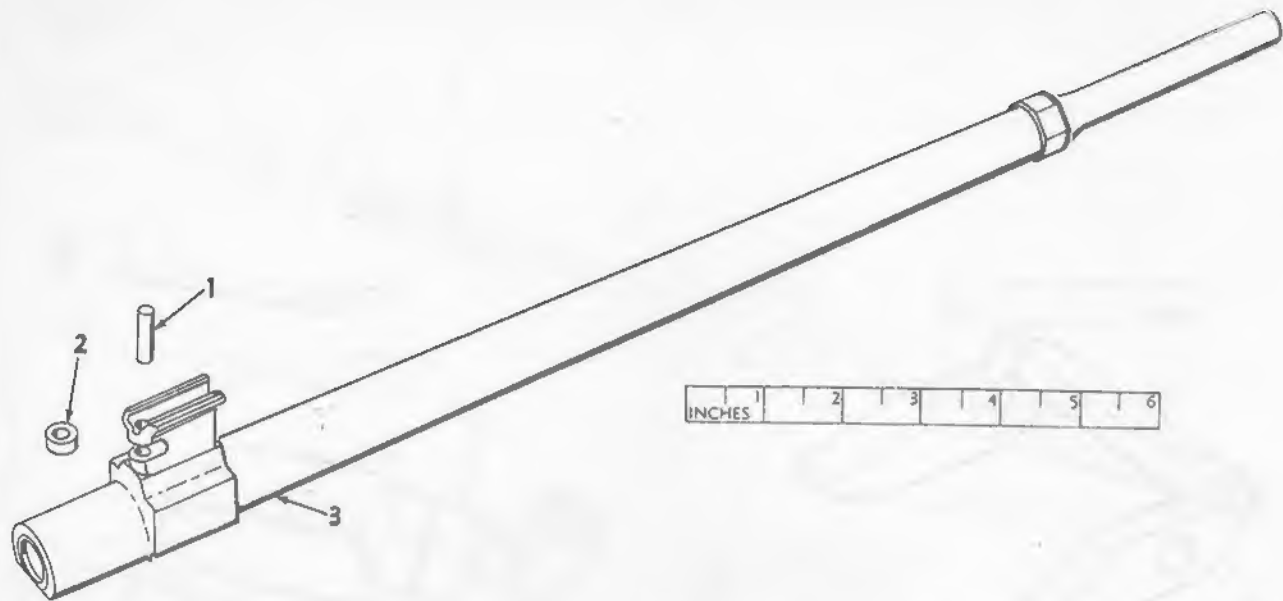


- 1 Shaft 1005-608-5124
- 2 Pawl 7269150
- 3 Spring 1005-608-5125
- 4 Chassis 7269163

Figure 6. Carrier chassis assembly—exploded view.

- 1 Ring 5340-286-6523
- 2 Pin 1005-608-5301
- 3 Roller 1005-608-5300
- 4 Pawl 1005-608-5299
- 5 Spring 1005-608-5302
- 6 Frame assy 1005-608-5298

Figure 7. Tray assembly cartridge feed—exploded view.



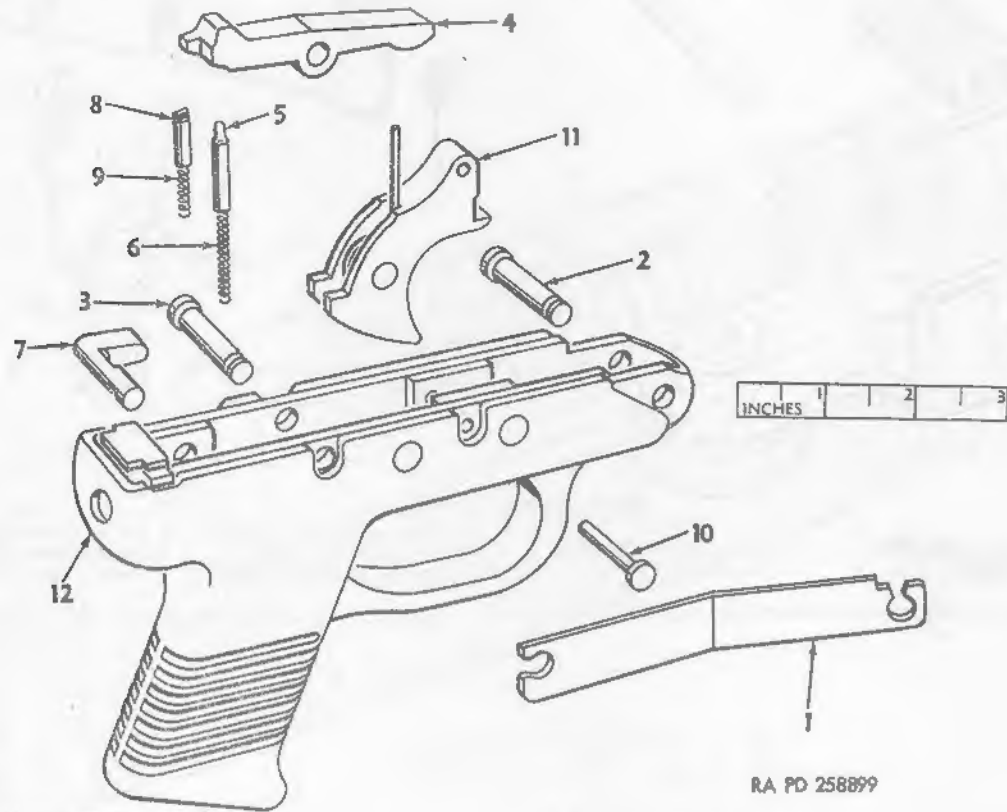
1 Pin 5315-608-5238

2 Roller 1005-608-5241

3 Body 7269274

RA PD 260798

Figure 8. Operating rod group—exploded view.

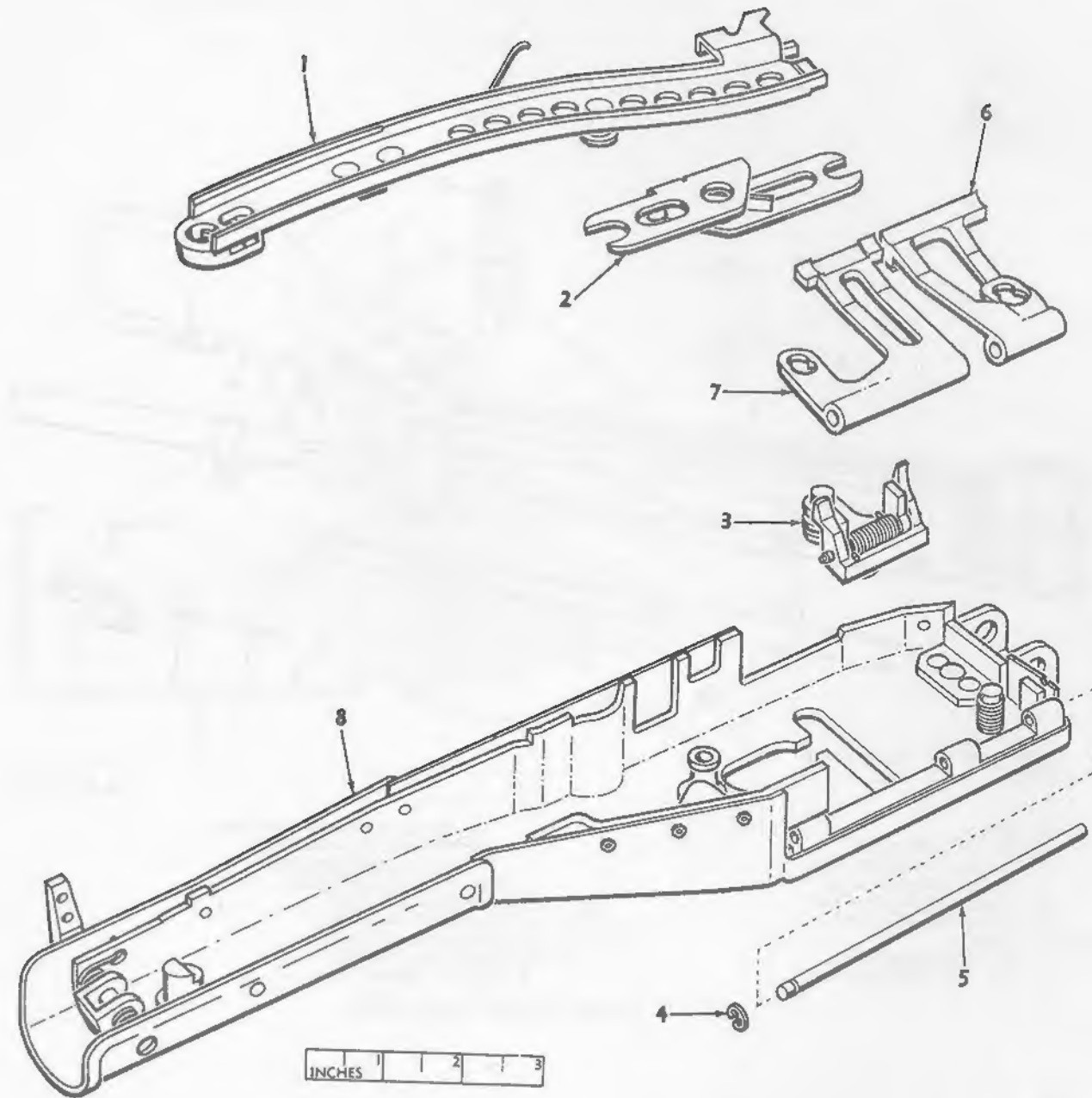


- 1 Spring 1005-608-5216
- 2 Pin 7269229
- 3 Pin 1005-608-5178
- 4 Sear 1005-608-5182
- 5 Plunger 1005-608-5180
- 6 Spring 1005-608-5184

- 7 Safety 1005-608-5143
- 8 Plunger 1005-608-5179
- 9 Spring 1005-608-5183
- 10 Pin 1005-608-5177
- 11 Trigger 7269228
- 12 Housing assy 1005-608-5176

RA PD 258899

Figure 9. Trigger assembly—exploded view.

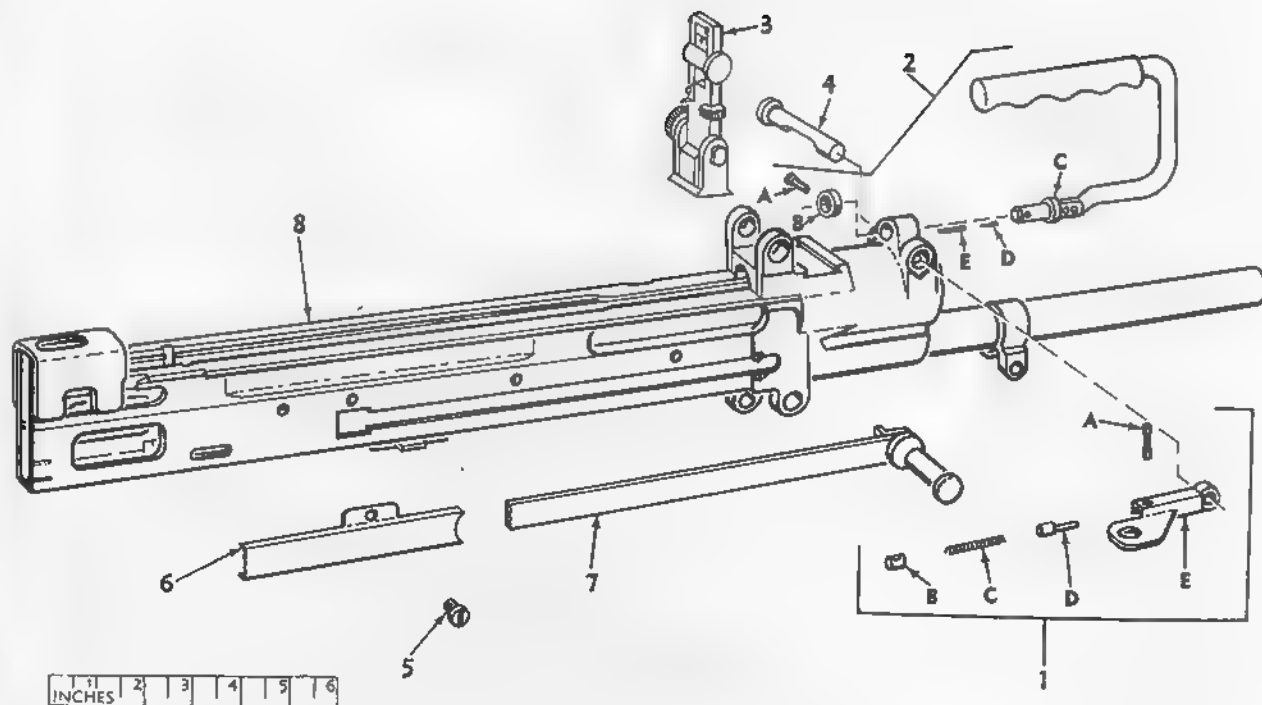


- 1 Cam 7269158
- 2 Lever 1005-608-5118
- 3 Pawl 1005-608-5093
- 4 Ring 5340-543-3297

- 5 Pin 5315-608-5094
- 6 Guide 1005-608-5089
- 7 Guide 1005-608-5090
- 8 Frame 7269129

RA PD 258904

Figure 10. Cover assembly—exploded view.

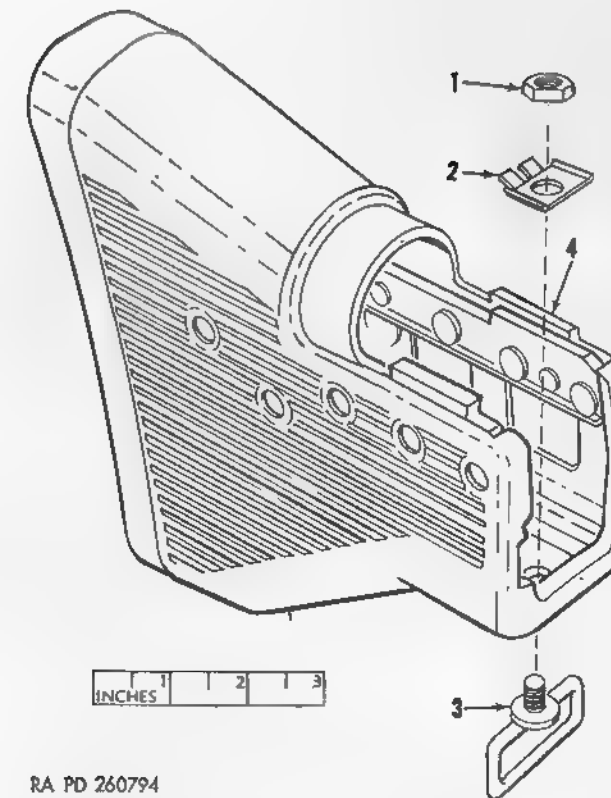


RA PD 263997

- 1 Lever group
 A—Pin 1005-608-5219
 B—Retainer 1005-608-5234
 C—Spring 1005-608-5268
 D—Plunger 1005-608-5220
 E—Lever 1005-608-5215
- 2 Handle group
 A—Pin 1005-608-5217
 B—ring 1005-608-5235

- C—Handle assy 1005-608-5203
 D—Plunger 1005-608-5221
 E—Spring 1005-608-5270
- 3 Sight assy 1005-608-5245
 4 Shaft 1005-608-5244
 5 Screw 5305-043 6913
 6 Guide 1005-608-5171
 7 Handle assy 7269236
 8 Receiver 7269253

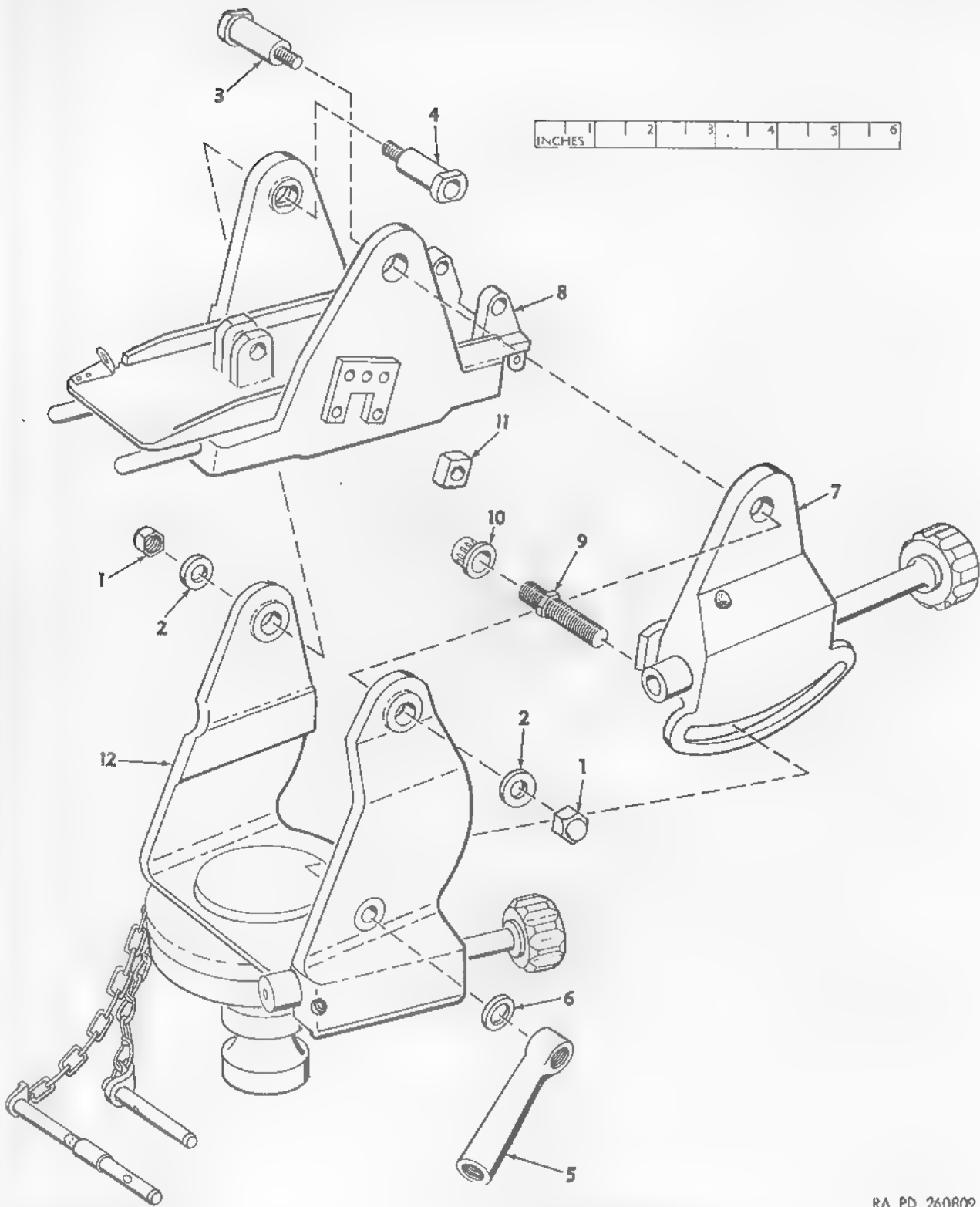
Figure 11. Receiver assembly—exploded view.



RA PD 260794

- 1 Nut 5310-011-5999
 2 Washer 1005-608-5162
 3 Swivel 1005-608 5161
 4 Frame 7269305

Figure 12. Butt stock group—exploded view.



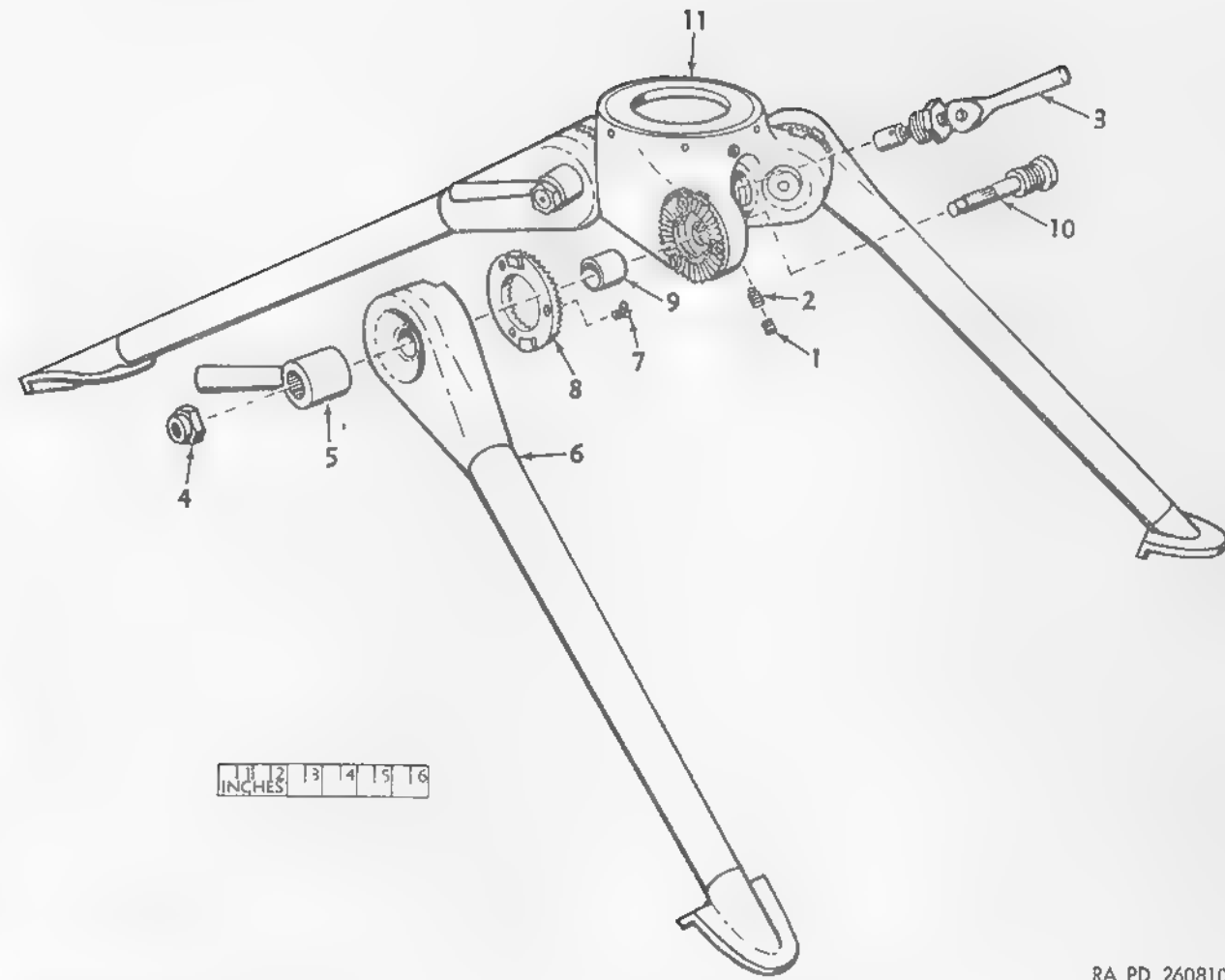
- 1 Nut 5310-050-3341
- 2 Washer 5310 011 8664
- 3 Pin 1005 608 1235
- 4 Pin 1005 608 1234
- 5 Handle 1005 608 1166
- 6 Washer 5310 543 5162

- 7 Case 7269507
- 8 Yoke and recoil 7269526
- 9 Stud 1005 608 1165
- 10 Nut 7269506
- 11 Block 1005-608 1164
- 12 Pintle 7269548

Figure 13. Cradle assembly—partial exploded view.

RA PD 260809

AGO 5302A



- 1 Screw 1005 608 1256
- 2 Screw 1005-608-1255
- 3 Clamp assy 1005-608-1253
- 4 Nut 1005 608 1257
- 5 Handle 1005 608 1258
- 6 Leg assy 1005 608 1270

- 7 Screw 7146227
- 8 Plate 1005-620-0708
- 9 Spacer 7146223
- 10 Screw 1010-714-6131
- 11 Socket assy 7269607

Figure 14. Tripod assembly—partial exploded view.

RA PD 260810

AGO 5302A

STOCK NUMBER INDEX

(1) Federal stock No.	(2) Part No.	(3) Figure No.	(4) Item No.	(1) Federal stock No.	(2) Part No.	(3) Figure No.	(4) Item No.
1005-556-4174	5564174			1005-608-1272	7269628		
1005-605-2198	7269355			1005-608-5002	7269028	2	12
1005-605-2199	7269356			1005-608-5003	7269029	2	3
1005-605-2200	7269357			1005-608-5004	7269030	2	6
1005-605-2201	7269358			1005-608-5005	7269031	2	8
1005-606-9676	7269617			1005-608-5006	7269032	2	10
1005-608-1163	7269502			1005-608-5007	7269033	2	11
1005-608-1164	7269503	13	11	1005-608-5008	7269034	2	2
1005-608-1165	7269504	13	9	1005-608-5009	7269035	2	7
1005-608-1166	7269505	13	5			2	9
1005-608-1169	7269508			1005-608-5014	7269040	2	5
1005-608-1170	7269509			1005-608-5022	7269048	3	1
1005-608-1171	7269510			1005-608-5024	7269050	3	4
1005-608-1175	7269514			1005-608-5026	7269052	3	3
1005-608-1177	7269516			1005-608-5027	7269053	3	2
1005-608-1178	7269517			1005-608-5034	7269060	1	13
1005-608-1179	7269518			1005-608-5037	7269063	1	5
1005-608-1180	7269519			1005-608-5039	7269065	1	4
1005-608-1182	7269521			1005-608-5047	7269073	1	8
1005-608-1184	7269523			1005-608-5048	7269074	1	10
1005-608-1185	7269524			1005-608-5054	7269080	1	1
1005-608-1186	7269525			1005-608-5055	7269081	1	6
1005-608-1190	7269529			1005-608-5056	7269082	1	2
1005-608-1191	7269530			1005-608-5057	7269083	1	11
1005-608-1193	7269532			1005-608-5058	7269084	1	7
1005-608-1194	7269533			1005-608-5059	7269085	1	9
1005-608-1196	7269535			1005-608-5060	7269086	1	12
1005-608-1204	7269544			1005-608-5061	7269087	1	3
1005-608-1205	7269545			1005-608-5070	7269096	4	
1005-608-1206	7269546			1005-608-5071	7269097	4	5
1005-608-1207	7269547			1005-608-5072	7269098	4	2
1005-608-1211	7269551			1005-608-5073	7269099	4	12
1005-608-1215	7269555			1005-608-5074	7269101	4	1
1005-608-1217	7269557			1005-608-5075	7269102	4	9
1005-608-1219	7269559			1005-608-5076	7269103	4	10
1005-608-1222	7269562			1005-608-5077	7269104	4	6
1005-608-1224	7269564			1005-608-5078	7269105	4	8
1005-608-1225	7269565			1005-608-5079	7269106	4	7
1005-608-1226	7269566			1005-608-5080	7269107	4	4
1005-608-1228	7269568			1005-608-5081	7269108	4	3
1005-608-1229	7269569			1005-608-5088	7269115		
1005-608-1230	7269570			1005-608-5089	7269116		6
1005-608-1231	7269571			1005-608-5090	7269117	10	7
1005-608-1232	7269572			1005-608-5091	7269118		
1005-608-1233	7269573			1005-608-5093	7269120	10	3
1005-608-1234	7269574	13	4	1005-608-5096	7269123		
1005-608-1235	7269575	13	3	1005-608-5097	7269124		
1005-608-1237	7269577			1005-608-5098	7269125		
1005-608-1240	7269580			1005-608-5109	7269136		
1005-608-1242	7269583			1005-608-5110	7269137		
1005-608-1247	7269588			1005-608-5115	7269142		
1005-608-1253	7269594	14	3	1005-608-5118	7269145	10	2
1005-608-1255	7269601	14	2	1005-608-5119	7269146		
1005-608-1256	7269602	14	1	1005-608-5122	7269149	6	
1005-608-1257	7269603	14	4	1005-608-5124	7269151	6	1
1005-608-1258	7269604	14	5	1005-608-5125	7269152	6	3
1005-608-1267	7269616			1005-608-5141	7269168	5	
1005-608-1270	7269623	14	6	1005-608-5143	7269170	9	7

(1) Federal stock No.	(2) Part No.	(3) Figure No.	(4) Item No.	(1) Federal stock No.	(2) Part No.	(3) Figure No.	(4) Item No.
1005-608-5153	7269180	5	3	1005-608-5302	7269335		5
1005-608-5160	7269187	5	2	1005-608-5311	7269344		
1005-608-5161	7269188	5	6	1005-620-0708	7269612	14	8
		12	3	1005-648-8721	7143813		
1005-608-5162	7269189	5	5	1005-649-8720	7143812		
		12	2	1005-649-8722	7269370		
1005-608-5171	7269198	11	6	1005-650-4507	7269629		
1005-608-5172	7269199			1005-650-4508	7790342		
1005-608-5176	7269203	9	12	1005-650-8237	6508237		
1005-608-5177	7269204	9	10	1005-654-4058	6544058		
1005-608-5178	7269205	9	3	1005-722-5087	7225087		
1005-608-5179	7269206	9	8	1010-714-6131	7146131	14	10
1005-608-5180	7269207	9	5	1090-714-1541	7141541		
1005-608-5182	7269209	9	4	4933-313-9485	5910297		
1005-608-5183	7269210	9	9	4933-605-2197	7269345		
1005-608-5184	7269211	9	6	4933-605-2202	7269359		
1005-608-5185	7269212			4933-608-5313	7269347		
1005-608-5203	7269231	11	2C	4933-653-3369	7269361		
1005-608-5208	7269237			4933-653-3370	7274739		
1005-608-5209	7269238			4933-653-3371	7274744		
1005-608-5210	7269239			4933-653-3372	7274748		
1005-608-5211	7269240			4933-653-3373	7274754		
1005-608-5214	7269243			4933-653-3380	8421864		
1005-608-5215	7269244	11	1E	4933-653-3381	8421865		
1005-608-5216	7269245	9	1	4933-653-9550	7799699		
1005-608-5217	7269246	11	2A	4933-726-5788	7265788		
1005-608-5218	7269247			5220-745-8598	7458598		
1005-608-5219	7269248	11	1A	5305-012-1457	121457		
1005-608-5220	7269249	11	1D	5305-013-3700	133700		
1005-608-5221	7269250	11	2D	5305-043-6913	MS35223-60	11	5
1005-608-5234	7269266	11	1B	5305-285-5192	MS35460-11		
1005-608-5235	7269267	11	2B	5310-011-5999	115999	12	1
1005-608-5236	7269268			5310-011-8664	MS15795-111	13	2
1005-608-5241	7269273	8	2	5310-050-3341	503341	13	1
1005-608-5244	7269276	11	4	5310-543-5162	MS15795-114	13	6
1005-608-5245	7269277	11	3	5310-608-5315	7269349		
1005-608-5263	7269300	11	1C	5315-050-5485	505485	2	1
1005-608-5269	7269301			5315-608-5094	7269121	10	5
1005-608-5270	7269302	11	2E	5315-608-5157	7269184	5	1
1005-608-5271	7269303			5315-608-5314	7269348		
1005-608-5272	7269304			5315-608-5238	7269270	8	1
1005-608-5276	7269308			5320-013-4637	134637		
1005-608-5298	7269331	7	6	5320-058-8362	588362		
1005-608-5299	7269332	7	4	5320-608-5012	7269038	2	4
1005-608-5300	7269333	7	3	5340-286-6523	587574	7	1
1005-608-5301	7269334	7	2	5340-543-3297	587571	10	4

PART NUMBER INDEX

(1) Part No.	(2) Federal stock No.	(3) Figure No.	(4) Item No.	(5) Total qty	(1) Part No.	(2) Federal stock No.	(3) Figure No.	(4) Item No.	(5) Total qty
MS15795-111	5310-011-8664	13	2	2	7269097	1005-608-5071	4	5	1
MS15795-114	5310-543-5162	13	6	1	7269098	1005-608-5072	4	2	1
21844		5	4	1	7269099	1005-608-5073	4	12	1
MS35228-60	5305-043-6913	11	5	1	7269101	1005-608-5074	4	1	1
MS35460-11	5305-285-5192			4	7269102	1005-608-5075	4	9	4
115999	5310-011-5999	12	1	2	7269103	1005-608-5076	4	10	1
121457	5305-012-1457			2	7269104	1005-608-5077	4	6	1
133700	5305-013-3700			9	7269105	1005-608-5078	4	8	1
134637	5320-013-4637			2	7269106	1005-608-5079	4	7	1
501219		4	11	1	7269107	1005-608-5080	4	4	1
503341	5310-050-3341	13	1	2	7269108	1005-608-5081	4	3	1
505485	5315-050-5485	2	1	1	7269115	1005-608-5088			1
587571	5340-543-3297	10	4	1	7269116	1005-608-5089	10	6	1
587574	5340-286-6523	7	1	2	7269117	1005-608-5090	10	7	1
588362	5320-058-8362			2	7269118	1005-608-5091			1
5564174	1005-556-4174			1	7269120	1005-608-5093	10	3	1
5910297	4933-313-9485			1	7269121	5315-608-5094	10	5	1
6508237	1005-650-8237			1	7269123	1005-608-5096			1
6544058	1005-654-4058			1	7269124	1005-608-5097			1
7141541	1090-714-1541			1	7269125	1005-608-5098			1
7143812	1005-649-8720			1	7269129		10	8	1
7143813	1005-648-8721			1	7269136	1005-608-5109			1
7146131	1010-714-6131	14	10	3	7269137	1005-608-5110			1
7146223		14	9	1	7269142	1005-608-5115			1
7146227		14	7	1	7269145	1005-608-5118	10	2	1
7225087	1005-722-5087			1	7269146	1005-608-5119			1
7265788	4933-726-5788			1	7269149	1005-608-5122	6		1
7269028	1005-608-5002	2	12	1	7269150		6	2	1
7269029	1005-608-5003	2	3	1	7269151	1005-608-5124	6	1	1
7269030	1005-608-5004	2	6	1	7269152	1005-608-5125	6	3	1
7269031	1005-608-5005	2	8	1	7269153		10	1	1
7269032	1005-608-5006	2	10	1	7269163		6	4	1
7269033	1005-608-5007	2	11	1	7269168	1005-608-5141	5		1
7269034	1005-608-5008	2	2	1	7269170	1005-608-5143	9	7	1
7269035	1005-608-5009	2	7	2	7269180	1005-608-5153	5	3	1
		2	9		7269183		5	7	1
7269038	5320-608-5012	2	4	2	7269184	5315-608-5157	5	1	1
7269040	1005-608-5014	2	5	1	7269187	1005-608-5160	5	2	1
7269047		3	5	1	7269188	1005-608-5161	5	6	2
7269048	1005-608-5022	3	1	2			12	3	
7269050	1005-608-5024	3	4	1	7269189	1005-608-5162	5	5	2
7269052	1005-608-5026	3	3	2			12	2	
7269053	1005-608-5027	3	2	2	7269198	1005-608-5171	11	6	1
7269060	1005-608-5034	1	13	1	7269199	1005-608-5172			1
7269063	1005-608-5037	1	5	1	7269203	1005-608-5176	9	12	1
7269065	1005-608-5039	1	4	1	7269204	1005-608-5177	9	10	1
7269073	1005-608-5047	1	8	1	7269205	1005-608-5178	9	3	2
7269074	1005-608-5048	1	10	1	7269206	1005-608-5179	9	8	1
7269080	1005-608-5054	1	1	1	7269207	1005-608-5180	9	5	1
7269081	1005-608-5055	1	6	1	7269209	1005-608-5182	9	4	1
7269082	1005-608-5056	1	2	1	7269210	1005-608-5183	9	9	1
7269083	1005-608-5057	1	11	1	7269211	1005-608-5184	9	6	1
7269084	1005-608-5058	1	7	1	7269212	1005-608-5185			1
7269085	1005-608-5059	1	9	1	7269228		9	11	1
7269086	1005-608-5060	1	12	1	7269229		9	2	1
7269087	1005-608-5061	1	3	1	7269231	1005-608-5203	11	2C	1
7269096	1005-608-5070	4		1	7269236		11	7	1

(1) Part No.	(2) Federal stock No.	(3) Figure No.	(4) Item No.	(5) Total qty	(1) Part No.	(2) Federal stock No.	(3) Figure No.	(4) Item No.	(5) Total qty
7269237	1005-608-5208			1	7269519	1005-608-1180			1
7269238	1005-608-5209			1	7269521	1005-608-1182			1
7269239	1005-608-5210			1	7269523	1005-608-1184			2
7269240	1005-608-5211			1	7269524	1005-608-1185			1
7269243	1005-608-5214			1	7269525	1005-608-1186			2
7269244	1005-608-5215	11	1E	1	7269526		13	8	1
7269245	1005-608-5216	9	1	1	7269529	1005-608-1190			2
7269246	1005-608-5217	11	2A	1	7269530	1005-608-1191			2
7269247	1005-608-5218			1	7269532	1005-608-1193			2
7269248	1005-608-5219	11	1A	1	7269533	1005-608-1194			1
7269249	1005-608-5220	11	1D	1	7269535	1005-608-1196			1
7269250	1005-608-5221	11	2D	1	7269544	1005-608-1204			1
7269253		11	8	1	7269545	1005-608-1205			1
7269266	1005-608-5234	11	1B	1	7269546	1005-608-1206			1
7269267	1005-608-5235	11	2B	1	7269547	1005-608-1207			2
7269268	1005-608-5236			1	7269548		13	12	1
7269270	5315-608-5238	8	1	1	7269551	1005-608-1211			1
7269273	1005-608-5241	8	2	1	7269555	1005-608-1215			1
7269274		8	3	1	7269557	1005-608-1217			1
7269276	1005-608-5244	11	4	1	7269559	1005-608-1219			1
7269277	1005-608-5245	11	3	1	7269562	1005-608-1222			1
7269300	1005-608-5268	11	1C	1	7269564	1005-608-1224			1
7269301	1005-608-5269			1	7269565	1005-608-1225			1
7269302	1005-608-5270	11	2E	1	7269566	1005-608-1226			1
7269303	1005-608-5271			1	7269568	1005-608-1288			1
7269304	1005-608-5272			1	7269569	1005-608-1229			8
7269305		12	4	1	7269570	1005-608-1230			1
7269308	1005-608-5276			1	7269571	1005-608-1231			1
7269331	1005-608-5298	7	6	1	7269572	1005-608-1232			1
7269332	1005-608-5299	7	4	1	7269573	1005-608-1233			1
7269333	1005-608-5300	7	3	2	7269574	1005-608-1234	13	4	1
7269334	1005-608-5301	7	2	1	7269575	1005-608-1235	13	3	1
7269335	1005-608-5302	7	5	1	7269577	1005-608-1237			6
7269344	1005-608-5311			1	7269580	1005-608-1240			1
7269345	4933-605-2197			1	7269583	1005-608-1242			2
7269347	4933-608-5313			1	7269588	1005-608-1247			1
7269348	5315-608-5314			1	7269594	1005-608-1253	14	3	1
7269349	5310-608-5315			1	7269601	1005-608-1255	14	2	1
7269355	1005-605-2198			1	7269602	1005-608-1256	14	1	1
7269356	1005-605-2199			1	7269603	1005-608-1257	14	4	3
7269357	1005-605-2200			1	7269604	1005-608-1258	14	5	3
7269358	1005-605-2201			1	7269607		14	11	1
7269359	4933-605-2202			1	7269612	1005-620-0708	14	8	3
7269361	4933-653-3369			1	7269616	1005-608-1267			1
7629370	1005-649-8722			1	7269617	1005-606-9676			1
7269502	1005-608-1163			1	7269623	1005-608-1270	14	6	1
7269503	1005-608-1164	13	11	1	7269628	1005-608-1272			1
7269504	1005-608-1165	13	9	1	7269629	1005-650-4507			1
7269505	1005-608-1166	13	5	1	7274739	4933-653-3370			1
7269506		13	10	1	7274744	4933-653-3371			1
7269507		13	7	1	7274748	4933-653-3372			1
7269508	1005-608-1169			1	7274754	4933-653-3373			1
7269509	1005-608-1170			2	7458598	5220-745-8598			1
7269510	1005-608-1171			1	7790342	1005-650-4508			1
7269514	1005-608-1175			1	7799699	4933-653-9550			1
7269516	1005-608-1177			1	8421864	4933-653-3380			1
7269517	1005-608-1178			1	8421865	4933-653-3381			1
7269518	1005-608-1179			2					

By Order of *Wilber M. Brucker*, Secretary of the Army:

MAXWELL D. TAYLOR,
General, United States Army,
Chief of Staff.

Official:

R. V. LEE,
Major General, United States Army,
The Adjutant General.

Distribution:

Active Army:

CNGB (1)
ASA (2)
Tech Stf, DA (1) except
CofOrd (15)
Ord Bd (2)
USCONARC (3)
US ARADCOM (2)
US ARADCOM Rgn (2)
OS Maj Comd (2) except
USAREUR (7)
Log Comd (3)
MDW (1)
Armies (3) except
First Army (5)
Corps (2)
Div (2)
Ord Gp (2)
Ord Bn (2) except
TOE 9-45, 9-375 (none)
Ord Co (2) except
TOE 9-12, 9-17, 9-46, 9-47,
9-57, 9-229, 9-347, 9-367,
9-376, 9-377, 9-387 (none)
Ft Bragg (2)
Ft Hood (7)
Ft Bliss (9)
Ft Sam Houston (7)
Ft Sill (12)
Svc Colleges (2)
Br Svc Sch (2) except
USA Ord Sch (50)

PMST Sr Div Ord Units (1)
Ord Ammo Comd (1)
GENDEP (2)
Ord Sec, GENDEP (5)
Ord Dep (10) except
Rossford Ord Dep (12)
Anniston Ord Dep (18)
Ports of Emb (OS) (2)
Trans Terminal Comd (2)
Army Terminals (2)
OS Sup Agcy (1)
Ord PG (10)
Ord Arsenals (5) except
Raritan Arsenal (33)
Frankford Arsenal (30)
Benecia Arsenal (20)
Mil Dist (1)
USA Corps (Res) (1)
Sector Comd, USA Corps (Res) (1)
Ord Proc Dist (1) except
Springfield Ord Proc Dist (none)
Pittsburgh Ord Proc Dist (none)
Rochester Ord Proc Dist (none)
MAAG (1)
Mil Msn (1)
JBUSMC (2)
JUSMAG (Greece) (2)
Fld Comd, AFSWP (1)
Units org Under fol TOE:
29-55 (2)

NG: State AG (3); units—same as Active Army except allowance is one copy to each unit.

USAR: None.

For explanation of abbreviations used, see AR 820-50.

TM 9-1005-224-35P GUN, MACHINE, 7.62-MM, M60 AND MOUNT, MACHINE GUN, 7.62-MM, M91-1959

ERIE ORDNANCE DEPOT
LACARNE, OHIO
RECEIVED
PUBLICATIONS

MAY 27 1959

AM 7,8,9,10,11,12,1,2,3,4,5,6 PM

